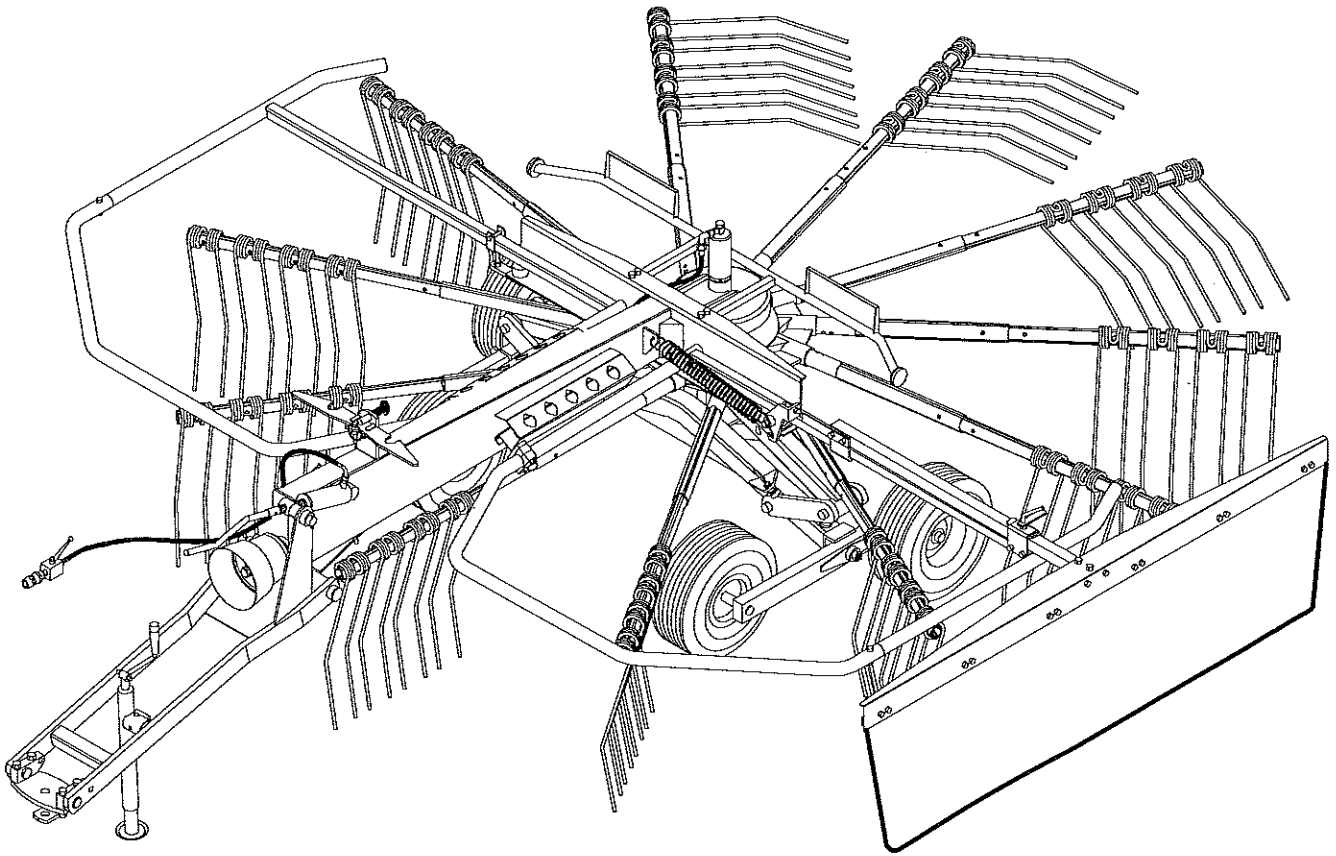
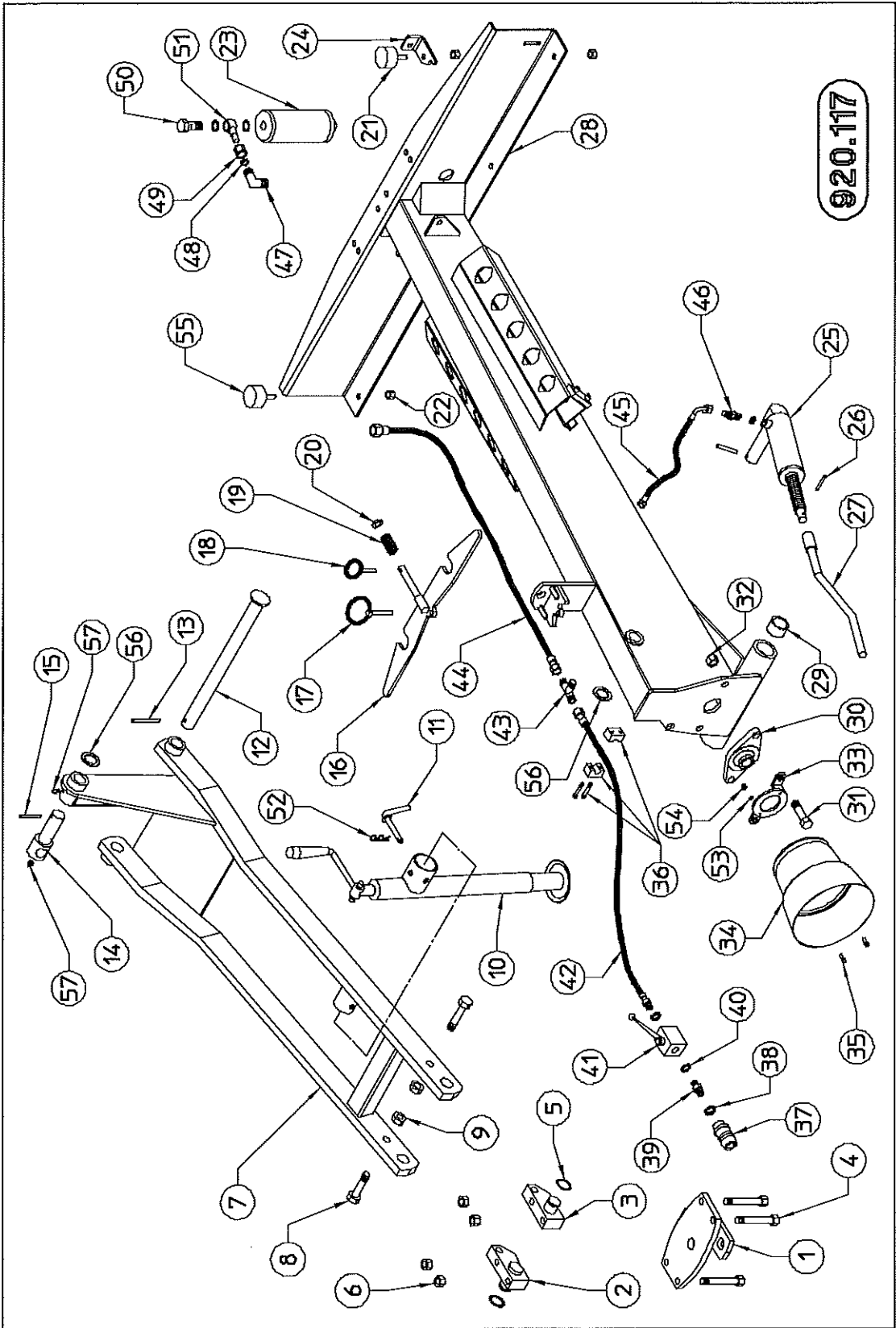


SPARE PARTS LIST





920.117

TABLE NO. 920.117				
420/11 Pull type				
ITEM	Q.ty	PART/NO	DESCRIPTION	NOTE
1	1	210.677	BRACKET	
2	1	210.719	RH EQUALIZER	
3	1	210.720	LH EQUALIZER	
4	4	600.737	SCREW	
5	2	600.611	SNAP RING	
6	4	600.075	NUT	
7	1	210.514	DRAWBAR	
8	2	600.292	SCREW	optyonal
9	2	600.080	NUT	optyonal
10	1	220.197	PARKING STAND	
11	1	200.222	PIN	
12	1	210.678	HINGE PIN	
13	1	600.027	SPRING PIN	
14	1	210.518/a	PIN	
15	2	600.539	SPRING PIN	
16	1	210.504	RATCHET	
17	1	600.017	PIN	
18	1	600.723	SPRING PIN	
19	1	210.558	SPRING	
20	1	600.031	WASHER	
21	3	610.283	RUBBER PAD	
22	8	600.008	NUT	
23	1	210.727	CYLINDER	
*	1	610.523	SET OF GASKET	
24	1	210.615	PLATE	
25	1	210.721/a	CYLINDER	
*	1	600.643	SET OF GASKET	
26	1	600.580	SPRING PIN	
27	1	210.722	CRANK	
28	1	210.513	FRAME	
29	2	210.761	BUSH	
30	1	610.285	BEARING	
31	2	610.167	SCREW	
32	2	600.080	NUT	
33	1	210.675	SUPPORT	
34	1	600.818	HOOD	
35	2	600.236	SCREW	
36	3	610.515	HOSE COLLAR	
*	*	210.726/a	HYDRAULIC KIT	
37	1	600.273	RAPID COUPLING	
38	1	600.269	COPPER WASHER	
39	1	600.416	NIPPLE	
40	5	600.039	WASHER	
41	1	610.002	VALVE	
42	1	610.494	HOSE	
43	1	600.272	FITTING	
44	1	610.492	HOSE	
45	1	610.493	HOSE	
46	1	600.270	NIPPLE	
47	1	610.512	NIPPLE	
48	1	610.513	GASKET	
49	1	610.514	NUT	
50	1	600.040	FITTING	
51	1	610.511	IRON PIPE	
52	1	600.019	SPLIT PIN	
53	2	600.412	WASHER	
54	2	600.532	NUT	
55	1	610.521	RUBBER PAD	
56	2	100.141	SHIM	
57	2	600.124	GREASE NIPPLE M6	

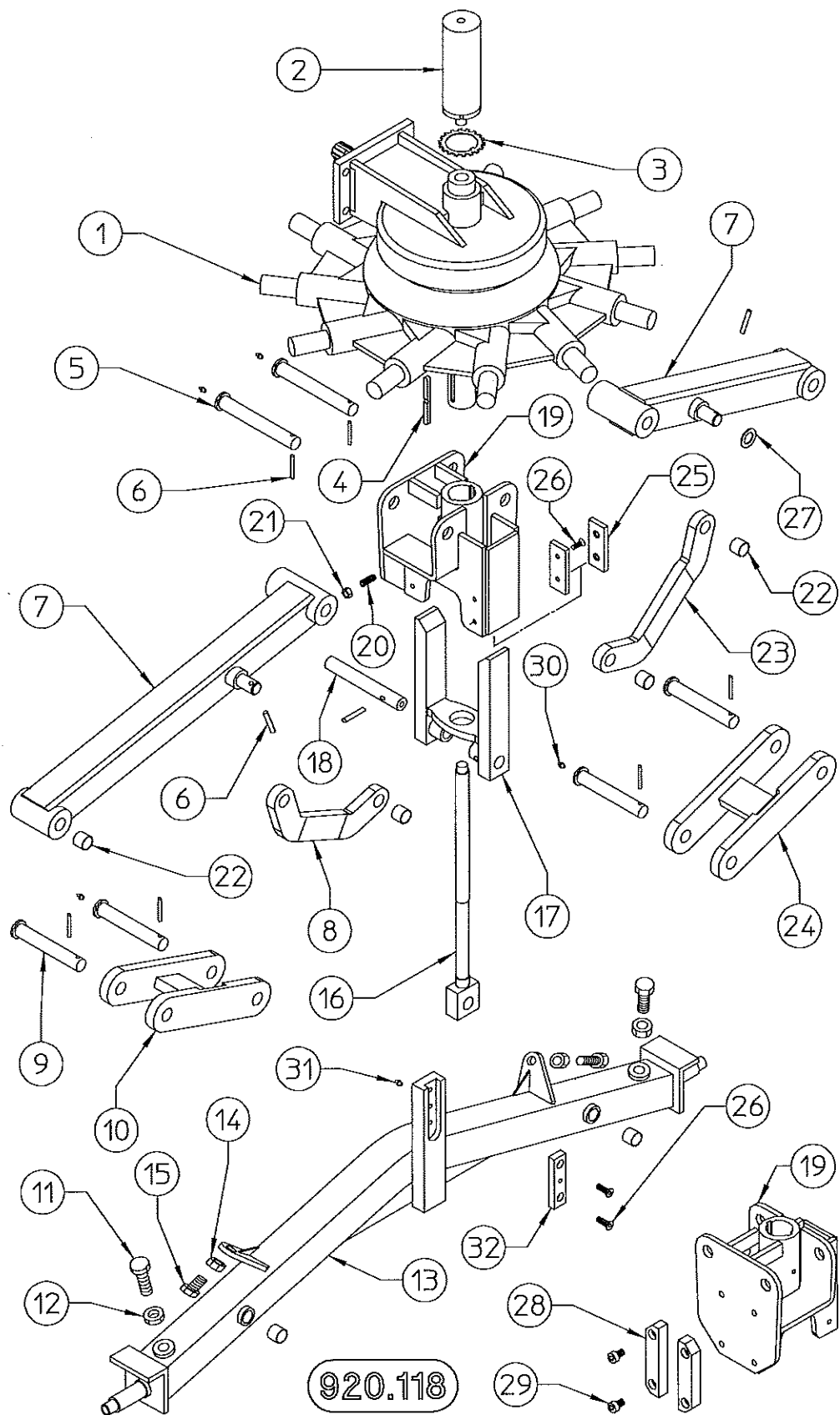
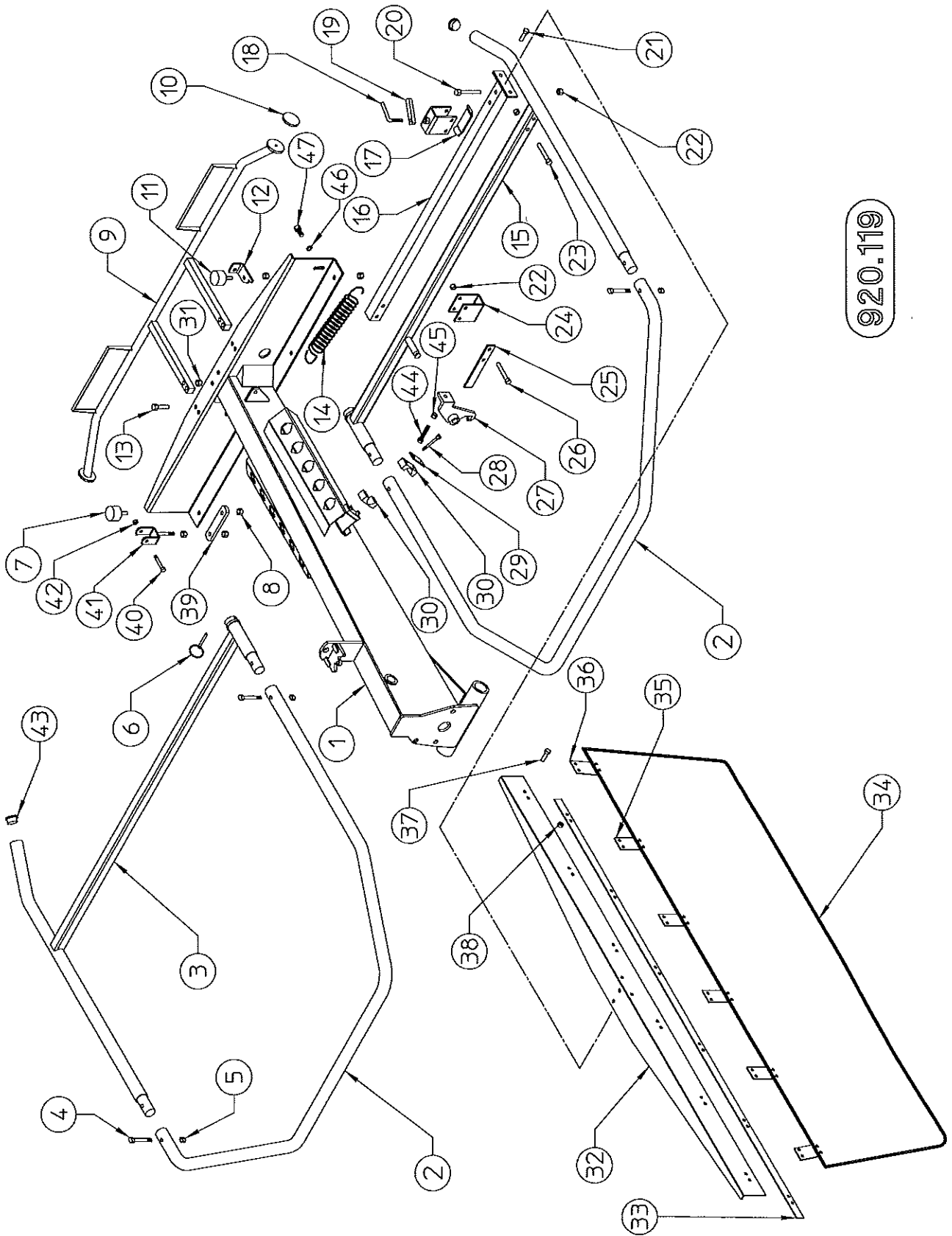
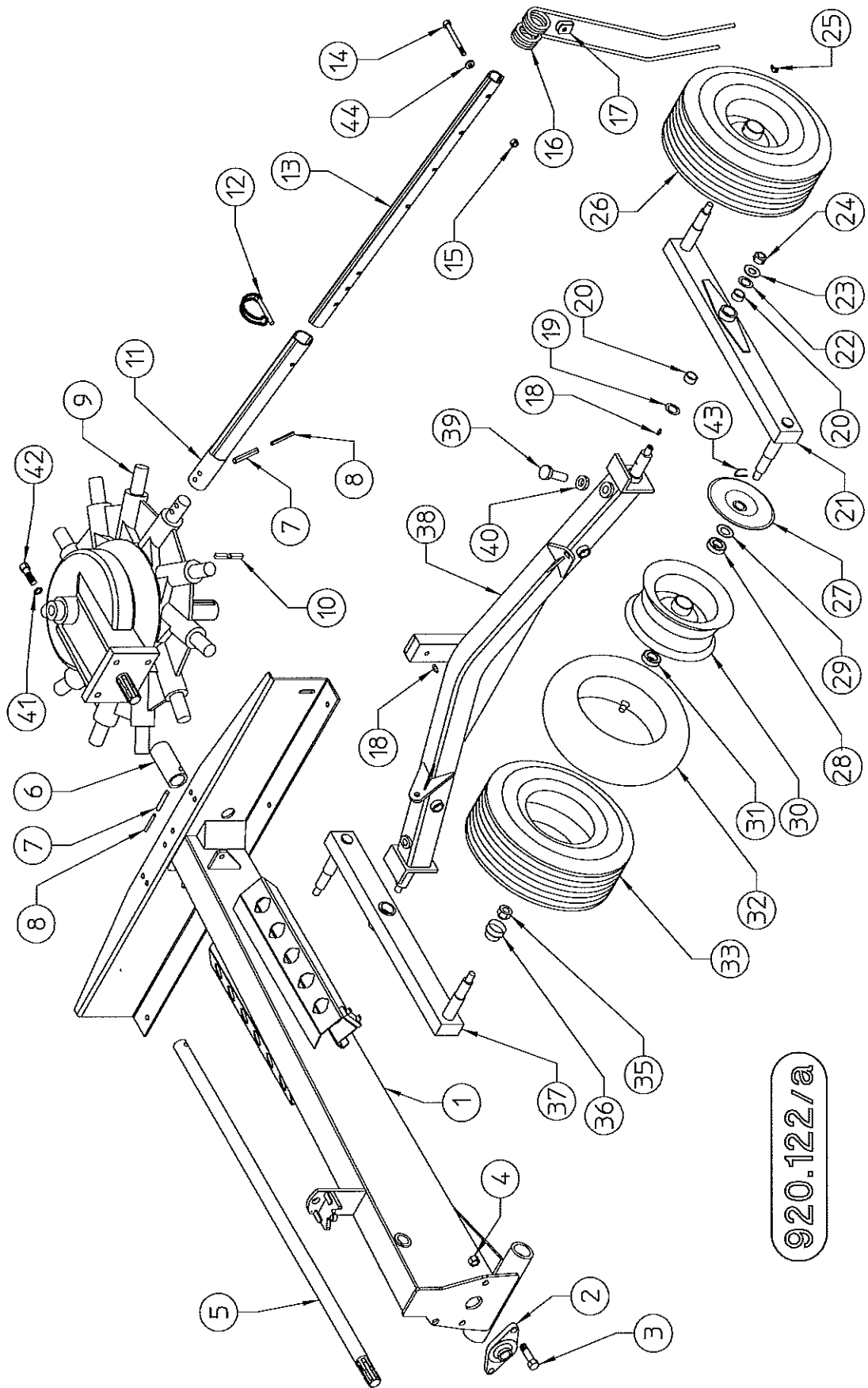


TABLE NO. 920.118				
420/11 Pull type				
ITEM	Q.ty	PART/NO	DESCRIPTION	NOTE
1	1	610.487	GEARBOX	
2	1*	210.727	CYLINDER	
3	2	8.3.8.00336	WASHER	
4	2	210.808	LATCH	
5	2	210.741	PIN	
6	9	600.108	SPRING PIN	
7	2	210.723	ARM	
8	1	210.682	TIEROD	
9	4	210.742	PIN	
10	1	210.762	LH SUPPORT	
11	2	610.497	SCREW	
12	2	620.206	NUT	
13	1	210.725/a	AXLE	
14	2	600.032	NUT	
15	2	610.167	SCREW	
16	1	210.680/a	ROD	
17	1	210.681	SUPPORT	
18	1	210.686/a	PIN	
19	1	210.679/b	SUPPORT	
20	2	610.586	SCREW	
21	2	600.772	NUT	
22	16	610.488	BUSH	
23	1	210.682	TIEROD	
24	1	210.724	RH SUPPORT	
25	4	210.729/a	SLIDING	
26	10	610.496	SCREW	
27	2	100.043	WASHER	
28	2	210.728/a	SLIDING	
29	4	610.503	SCREW	
30	7	600.034	GREASE NIPPLE	
31	1	600.124	GREASE NIPPLE	
32	1	210.939	SLIDING	



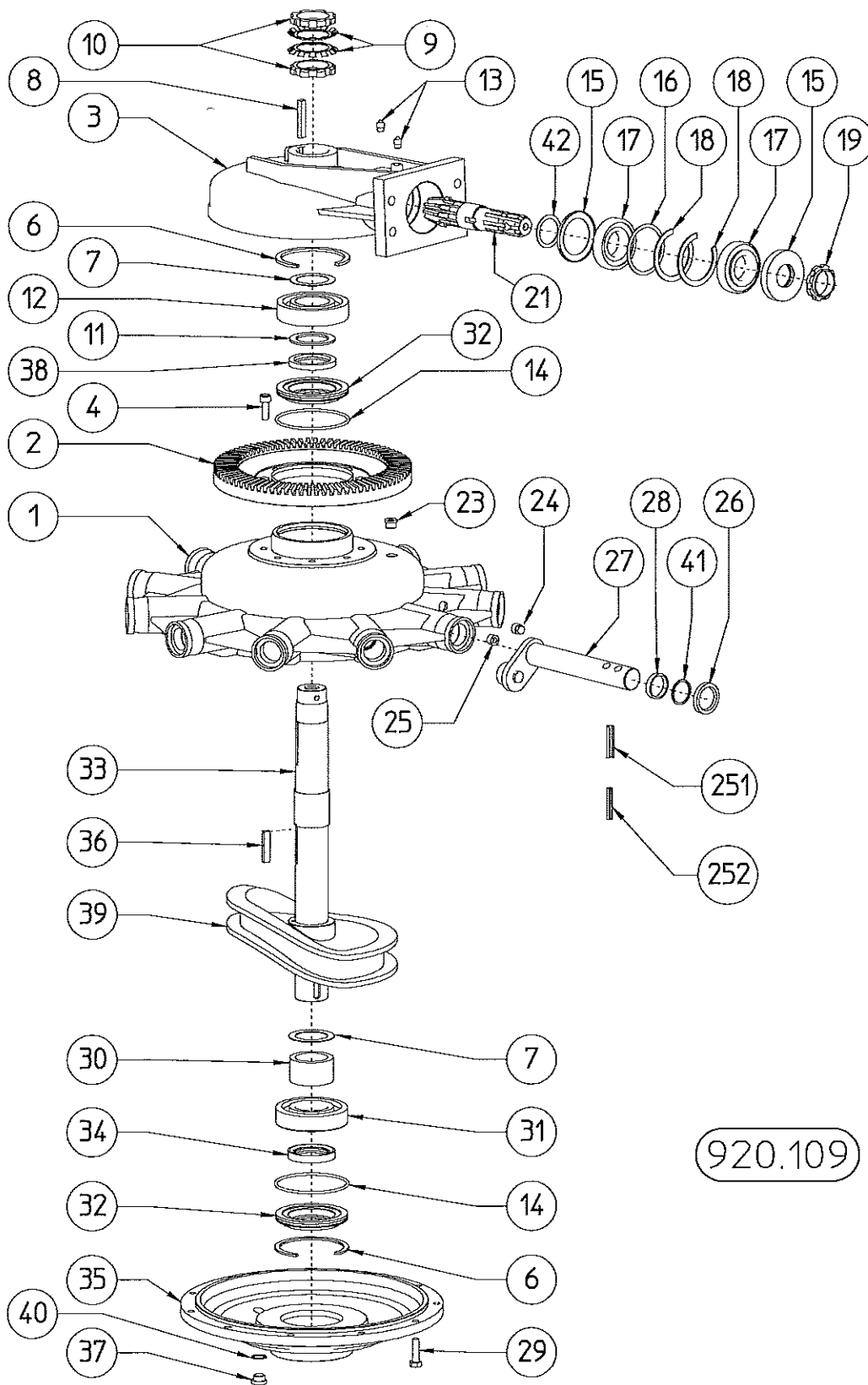
920.119

TABLE NO. 920.119				
420/11 Pull type				
ITEM	Q.ty	PART/NO	DESCRIPTION	NOTE
1	1*	210.513	FRAME	
2	2	220.623	GUARD	
3	1	220.622	RH GUARD SUPPORT	
4	4	600.437	SCREW	
5	4	600.029	NUT	
6	2	610.186	PIN	
7	1*	610.521	RUBBER PAD	
8	10*	600.008	NUT	
9	9	210.511	LIGHTING BRACKET	
10	2	610.289	REFLECTOR	
11	3*	610.283	RUBBER PAD	
12	1*	210.615	PLATE	
13	4	600.154	SCREW	
14	1	210.557	SPRING	
15	1	220.621	LH GUARD SUPPORT	
16	1	220.624	TELESCOPING TUBE	
17	1	210.512	PLATE	
18	1	210.502	PIN	
19	1	210.552	NUT	
20	2	600.437	SCREW	
21	2	600.006	SCREW	
22	8	600.029	NUT	
23	4	610.500	SCREW	
24	2	210.498	U-BRACKET	
25	1	210.553	PLATE	
26	2	600.726	SCREW	
27	1	210.554	HOOK	
28	4	610.333	SCREW	
29	2	610.491	PLATE	
30	4	610.332	HOSE COLLAR	
31	4	600.077	NUT	
32	1	210.508	SWATHING SUPPORT	
33	1	210.509	CLAMPING STRAP	
34	1	210.510	SWATHING DEFLECTOR	
35	4	210.555	CLAMPING STRAP	
36	2	210.556	CLAMPING STRAP	
37	12	600.223	SCREW	
38	12	600.076	NUT	
39	1	210.809	PLATE	
40	1	610.525	SCREW	
41	1	210.810	SUPPORT	
42	1	600.076	NUT	
43	2	610.501	PLUG	
44	1	610.499	SCREW	
45	1	600.010	NUT	
46	1	600.089	WASHER	
47	1	600.770	SCREW	



920.122/a

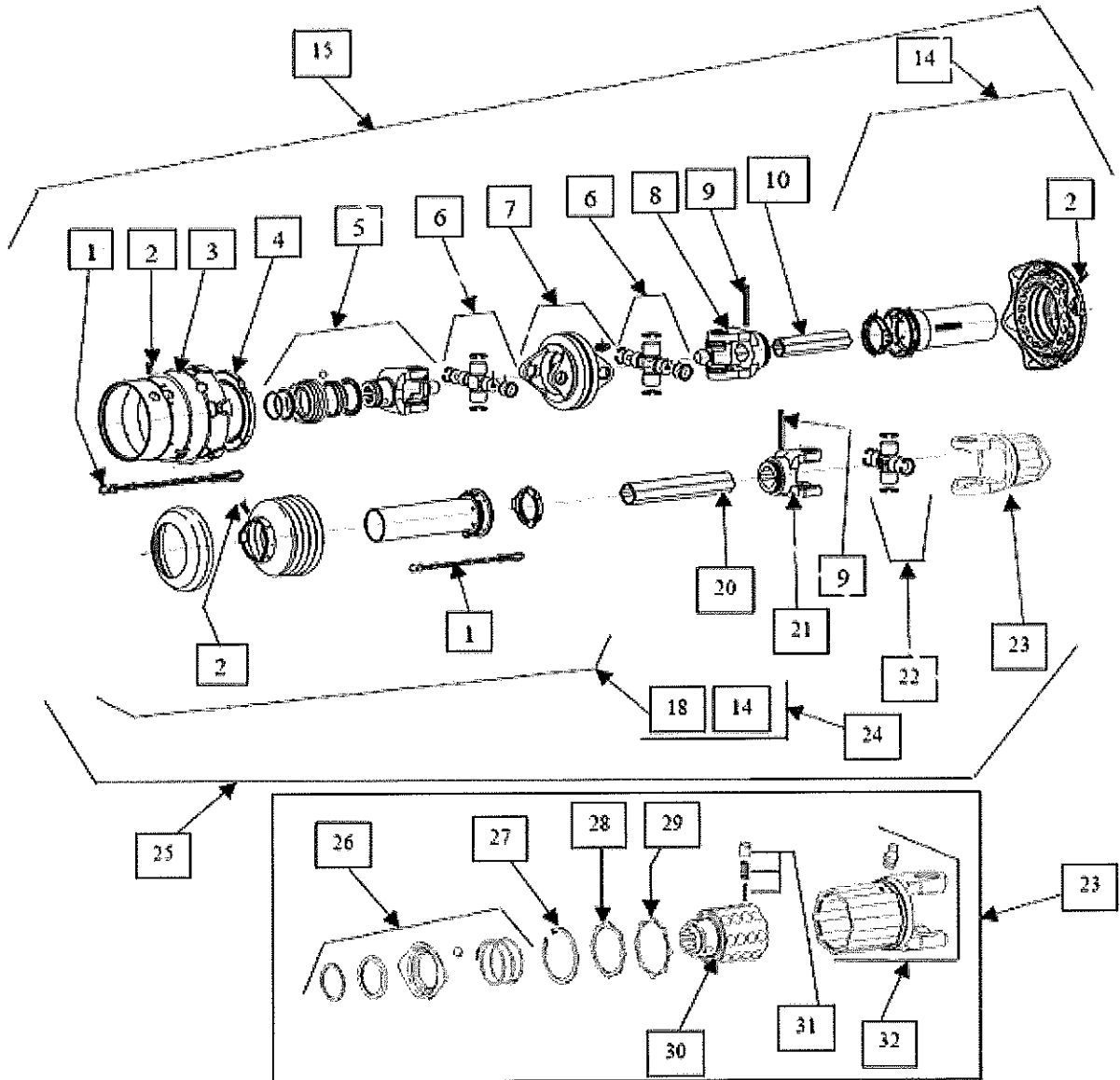
TABLE NO. 920.122/a				
420/11 Pull type				
ITEM	Q.ty	PART/NO	DESCRIPTION	NOTE
1	1*	210.513	FRAME	
2	1*	610.285	BEARING	
3	2*	610.167	SCREW	
4	2*	600.080	NUT	
5	1	210.525	SHAFT	
6	1	210.528	BUSH	
7	23	610.417	SPRING PIN	
8	23	610.419	SPRING PIN	
9	1*	610.487	GEARBOX	
10	2*	210.808	LATCH	
11	11	210.494	PROFILE TUBE	
12	11	600.842	PIN	
13	11	210.767	TINE ARM	
14	44	600.386	SCREW	
15	44	600.077	NUT	
16	44	210.495	TINE	
17	44	200.349	TINE LOCK, FLEXIBLE	
18	3	600.124	GREASE NIPPLE	
19	2	200.272	SHIM	
20	4	600.808	BUSHING	
21	1	210.941	TANDEM ARM	
22	6	200.273	SHIM	
23	2	200.165	WASHER	
24	2	600.079	NUT	
25	4	600.968	GREASE NIPPLE	
26	4	610.677	TYRE ASSY	
27	4	210.942	DUST COVER, INNER	
28	4	600.287	BEARING	
29	4	610.672	DUST COVER	
30	4*	610.683	RIM	
31	4	600.287	BEARING	
32	4*	610.527	TUBE	
33	4*	610.528	TYRE	
34				
35	4	600.288	NUT	
36	4	600.290	DUST COVER, OUTER	
37	1	210.941	TANDEM ARM	
38	1*	210.725/a	AXLE	
39	2	610.497	SCREW	
40	2	600.257	NUT	
41	4	600.180	WASHER	
42	4	600.044	SCREW	
43	4	600.291/1	PIN	
44	44	500.012	WASHER 13/28-3,5	



920.109

TABLE NO 920.109				
ITEM	PART NO	Q.ty	DESCRIPTION	NOTE
1	220.732	1	GEAR BOX	
2	220.721	1	GEAR	
3	220.722	1	CAP	
4	220.723	8	SCREW	
6	620.177	2	SNAP RING	
7	220.724	3	SHIM	
8	620.178	1	LATCH	
9	620.179	2	WASHER	
10	620.180	2	NUT	
11	220.733	1	SHIM	
12	620.127	1	BEARING	
13	620.182	2	GREASE NIPPLE	
14	620.163	2	GASKET	
15	620.140	2	DUST COVER	
16	220.726	1	SHIM	
17	620.181	2	BEARING	
18	620.148	2	SNAP RING	
19	220.727	1	REGISTER NUT	
21	220.715	1	PINION	
23	620.151	1	PLUG	
24	620.183	1	PLUG	
25	620.184	1	PLUG	
26	620.162	11	DUST COVER	
27	220.720	11	ARM	
28	220.707	11	SPACER	
29	220.731	11	SCREW	
30	220.717	1	SPACER	
31	620.185	1	BEARING	
32	220.712	2	DUST COVER SUPPORT	
33	220.713	1	SHAFT	
34	620.158	1	DUST COVER	
35	220.728	1	CAP	
36	620.178	1	LATCH	
37	620.153	1	PLUG	
38	620.157	1	DUST COVER	
39	220.711	1	CAM	
40	620.175	1	WASHER	
41	220.718	11	SHIM	
42	220.729	1	SHIM	
251	620.142	22	SPRING PIN	
252	620.144	22	SPRING PIN	

CARDAN SHAFT 620.867



CARDAN SHAFT 620.867			
ITEM	DESCRIPTION	Q.ty	PART NO
1	CHAIN	2	620.918
2	SPECIAL SCREW	12	620.919
3	GUARD	1	620.920
4	BEARING	1	620.921
5	YOKE	1	620.922
6	CROSS JOURNAL ASSEMBLY	2	620.923
7	CENTER JOINT	1	620.924
8	YOKE	1	620.925
9	SPRING PIN	2	620.926
10	CARDAN TUBE	1	630.579
14	HALF SAFETY GUARD	1	630.580
15	HALF SHAFT (WITH GUARD)	1	630.581
18	HALF SAFETY GUARD	1	630.582
20	CARDAN TUBE	1	630.583
21	YOKE	1	620.936
22	CROSS JOURNAL ASSEMBLY	1	620.937
23	TORQUE K34	1	620.938
24	SAFETY GUARD	1	630.584
25	HALF SHAFT (WITH GUARD)	1	630.585
26	BALL COLLAR KIT	1	620.941
27	SNAP RING	1	620.942
28	RETAINING RING	1	620.943
29	RETAINING RING	1	620.944
30	HUB 1 3/8" Z6	1	620.945
31	SET INCLUDING NR 8 RATCHET TOOTH	4 set	620.946
32	HUB WITH YOKE	1	620.947